

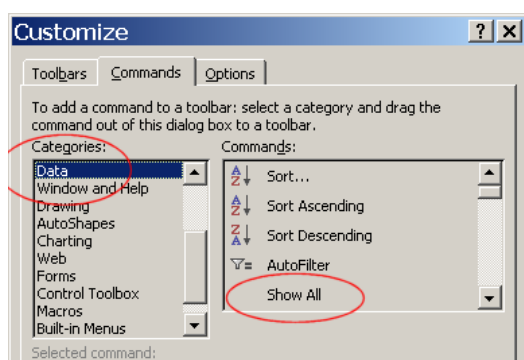
## Using Helvetica's RIC Lists

This document will show you how to use Helvetica's RIC lists to identify your coins.

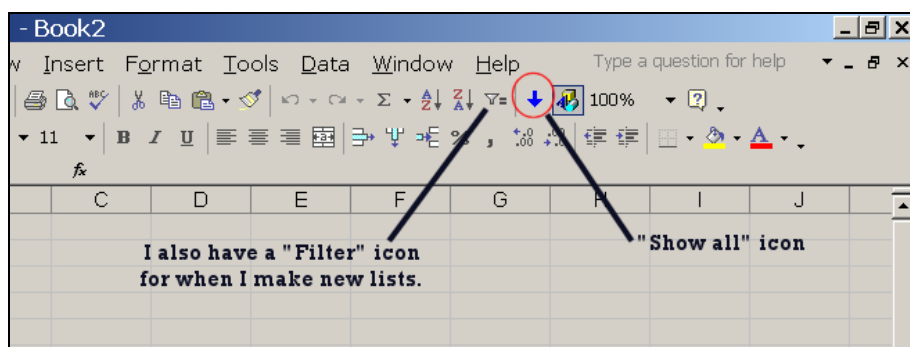
Before we begin, if you think you will be using the lists a lot, it would be a good idea to add a "Show All" icon to the top of your screen to avoid using **Data..Filter..Show** all.

Here is how to add a "Show All" icon. (You may see mine in the images below, as a blue arrow pointing downwards but you can use any of the icons which Windows provide or make one of your own)

1. Open Excel and click on Tools... Commands ....Data
2. You will see the "Show All" command in the right hand window.
3. Click on "Show All", keep the left mouse button pressed down and drag this up to the toolbar line at the top of your screen. Drop it in the place you want it to be.



4. We prefer little icons to the words "Show All" in the icon bar, don't we?, so we need to change the words to a picture. To do this, **keep the above window open**, and right-click the words "Show All" in the toolbar. (I can't show you the next image because when I use ALT PrtScr, the popup window disappears). In the popup window, click on "Change button image" and another window will appear with a selection of small images. I use the blue "down" button. Click on that, or another of your choice.
5. Your toolbar will now show the icon AND the words "Show All" which we don't want, so, **still keeping the window above open**, right click the "Show All" again and select "Default Style". Now you only have the icon itself.



If you want to get rid of any unwanted or unused icons, which may be cluttering up your toolbar, click on Tools.. Commands as above, then click on the icon you don't want **in your toolbar**, drag it down to the open window and drop it anywhere there.

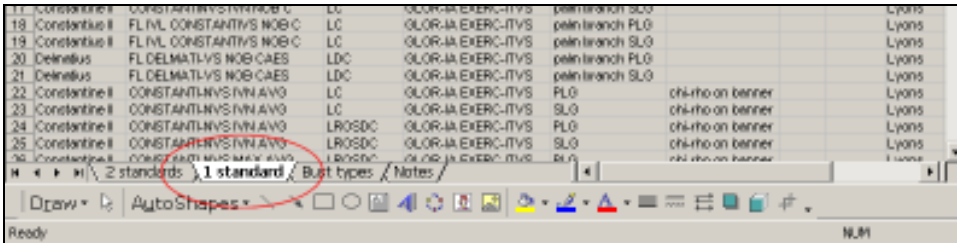
Now we can begin.

Let's do a fairly clear soldiers and standards coin:



This is one from my own collection.

1. First we open (or download and open the "soldiers with standards" xls file.
2. The reverse has only one standard between the soldiers, so we click on the "One Standard" tab at the bottom:



2. We will now look at the obverse to start shortening the list. The legend reads **CONSTAN-TIVS AVG**, so we click on the arrow next to **Obverse legend / and pos.** and scroll down the drop-down list until we find **CONSTAN-TIVS AVG-**

1	A	B	C	D
Ruler	Obverse legend / and pos.	Bust type	Break in Rev. legen	
2	lines in tan co	CONSTANTIVS AVG		
3	GLORIA EXERC	CONSTANTIVS AVG		ing each other, resting hand on
4	Constantine II	CONSTANTI-NVS IVN N C	LDC	GLOR-IA EXERC-ITVS
5	Delmatius	CONSTANTI-NVS IVN NOB C	LDC	GLOR-IA EXERC-ITVS
6	Constantine II	CONSTANTI-NVS IVN NOB C	LC	GLOR-IA EXERC-ITVS
7	Constantine II	CONSTANTI-NVS MAX AVG	LC	GLOR-IA EXERC-ITVS
8	Constantine II	CONSTANTI-NVS PF AVG	LC	GLOR-IA EXERC-ITVS
9	Constantius II	CONSTANTI-NVS VM AVG	LC	GLOR-IA EXERC-ITVS
10	Constantius II	CONSTANTIVS AVG	LDCB	GLOR-IA EXERC-ITVS
11	Constantine I	CONSTANTI-VS AVG	ROSDC	GLOR-IA EXERC-ITVS
12	Constantine I	CONSTANTI-VS MAX AVG	ROSDC	GLOR-IA EXERC-ITVS
13	Constantine II	CONSTANTI-VS PF AVG	LC	GLOR-IA EXERC-ITVS
14	Constantine II	CONSTANTI-VS PF AVG	LC	GLOR-IA EXERC-ITVS
15	Constantine II	CONSTANTI-VS PF AVG	LC	GLOR-IA EXERC-ITVS
16	Constantine II	CONSTANTI-VS PF AVG	LC	GLOR-IA EXERC-ITVS
17	Constantine II	CONSTANTI-VS PF AVG	LC	GLOR-IA EXERC-ITVS
18	Constantine II	CONSTANTI-VS PF AVG	LC	GLOR-IA EXERC-ITVS
19	Constantine II	CONSTANTI-VS PF AVG	LC	GLOR-IA EXERC-ITVS
20	Constantine II	CONSTANTI-VS PF AVG	LC	GLOR-IA EXERC-ITVS
21	Constantine II	CONSTANTI-VS PF AVG	LC	GLOR-IA EXERC-ITVS

Click on that legend, the list is shortened to only coins with that obverse legend and at the bottom left, it even tells you how many possibles there are, in this case 104 (from a total of 1379) (Note, by a later date these numbers may have changed, depending on whether newly discovered coins have been added to the list in the meantime!):

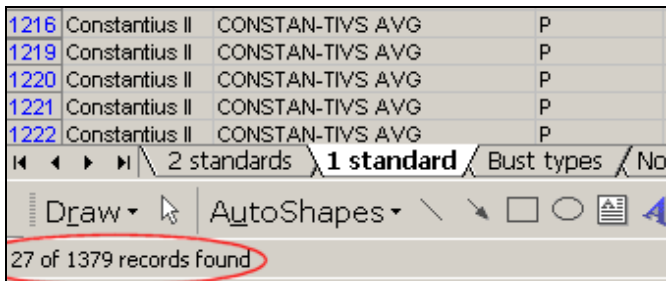
602	Constantius II	CONSTAN-TIVS AVG	LROS	GLOR-IA EXER
603	Constantius II	CONSTAN-TIVS AVG	LROS	GLOR-IA EXER
604	Constantius II	CONSTAN-TIVS AVG	LROS	GLOR-IA EXER
605	Constantius II	CONSTAN-TIVS AVG	LROS	GLOR-IA EXER
606	Constantius II	CONSTAN-TIVS AVG	LROS	GLOR-IA EXER
654	Constantius II	CONSTAN-TIVS AVG	P	GLOR-IA EXER
655	Constantius II	CONSTAN-TIVS AVG	P	GLOR-IA EXER
656	Constantius II	CONSTAN-TIVS AVG	P	GLOR-IA EXER
657	Constantius II	CONSTAN-TIVS AVG	P	GLOR-IA EXER

104 of 1379 records found

So we still have a way to go.

We can see that the head is pearl-diademed only, no drapery, no cuirasse, so in the **Bust Type** column, we click on P (= pearl-diademed head only. A list of abbreviations and what they mean is always on another sheet of my RIC list Excel files).

Click on that bust type, the list is shortened to only coins with our obverse legend and our bust type and at the bottom left, it tells you we have shorted the list yet again, to only 27 possibles:



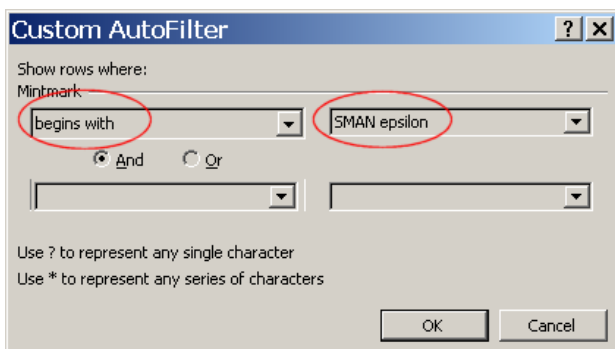
1216	Constantius II	CONSTAN-TIVS AVG	P
1219	Constantius II	CONSTAN-TIVS AVG	P
1220	Constantius II	CONSTAN-TIVS AVG	P
1221	Constantius II	CONSTAN-TIVS AVG	P
1222	Constantius II	CONSTAN-TIVS AVG	P

If you look closely at the coin, you will see that there is a dot to the left and to the right of the top of the banner. So in the **left field** column, select **dot**. The list is shortened yet again.

Now for the mintmark: What if you can only read a few letters ? In this case we can use the **Custom** option of the dropdown list. This is an extremely useful tool. You can tell it to give you only those which e.g. **begins with.. ends with.. contains.. does not begin with..** etc. It is great for unclear legends, e.g. Bust type.. **contains..** -TINVS

We can read our mintmark quite clearly, it looks like **SMAN epsilon..** then another letter which could be gamma ( $\Gamma$ ), or an **I**, so let's use the **Custom** option here:

Click on the **Mintmark** column and then on **Custom**. In the left hand window, click on **begins with..** and in the right hand window enter SMAN epsilon and click OK.



Custom AutoFilter

Show rows where:

Mintmark

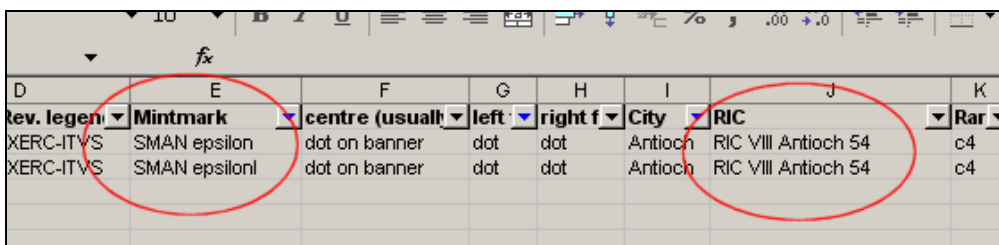
begins with SMAN epsilon

And  Or

Use ? to represent any single character  
Use \* to represent any series of characters

OK Cancel

This limits the list to only 2 entries



rev. legen	Mintmark	centre (usual)	left	right f	City	RIC	Rar
XERC-ITVS	SMAN epsilon	dot on banner	dot	dot	Antioch	RIC VIII Antioch 54	c4
XERC-ITVS	SMAN epsilonI	dot on banner	dot	dot	Antioch	RIC VIII Antioch 54	c4

So the letter after the epsilon is an I and our coin is RIC VIII Antioch, 54, rated C4, so a coin which is not all that common and is almost scarce.

Some further tips:

- Take advantage of the options of the **Custom** function to shorten lists. Experiment with it until you become familiar with it. It will accept hyphens (as in CONSTAN-S AVG) but stars are used to denote "any number of letters", and this is the reason why mintmarks which have stars in them in my lists e.g. **R\*T** (RIC VII Rome 394) is written out as **R star T**.

- Look closely for worn mintmark components or fieldmarks. Many of the dots in "dot TS dot A" etc. mintmarks of e.g. Iovi coins are often worn.

- The lists are constantly being added to, as I find time to work through hoard lists. However, my limited budget does not permit me to buy all the latest hoard books, so if you do get a type not in the list, please send me good pictures of your coin for me to look at. I do not add coins to my lists if I have not actually seen good images of the coin.

Anyway, have fun and lots of luck identifying your coins.

I can always be contacted at [helvetica.dane@gmail.com](mailto:helvetica.dane@gmail.com)

In urgent cases, you can Skype me (I am in Switzerland. I can usually be reached from about 3 pm to about 2 a.m. with a break for dinner in the evening): [helvetica1](https://www.skype.com/en/contacts/helvetica1)

Dane ("Helvetica")